



# **‘DESIGNING’ THE POST COVID CITY**

## **SESSION 3 : DENSITY & LAND USE**

Nathan Iyer



PLANNING URBAN DESIGN ARCHITECTURE

A photograph of a large industrial facility, likely a steel mill or power plant, with several tall smokestacks emitting thick, white plumes of smoke that rise into a cloudy sky. The foreground shows some industrial buildings and bare trees, suggesting a cold environment. The overall tone is somber and industrial.

**Must be seen in the context of a series  
of events related to climate change**

IYER





**The intersection of a public health crisis  
with an urbanization crisis**





**Ensure Resiliency now for various events –  
urbanization, climate change and health crisis**





**Cities have been shaped by  
responses to health crises**





Is Density a bad & contributor?







The opposite of density is far worse !

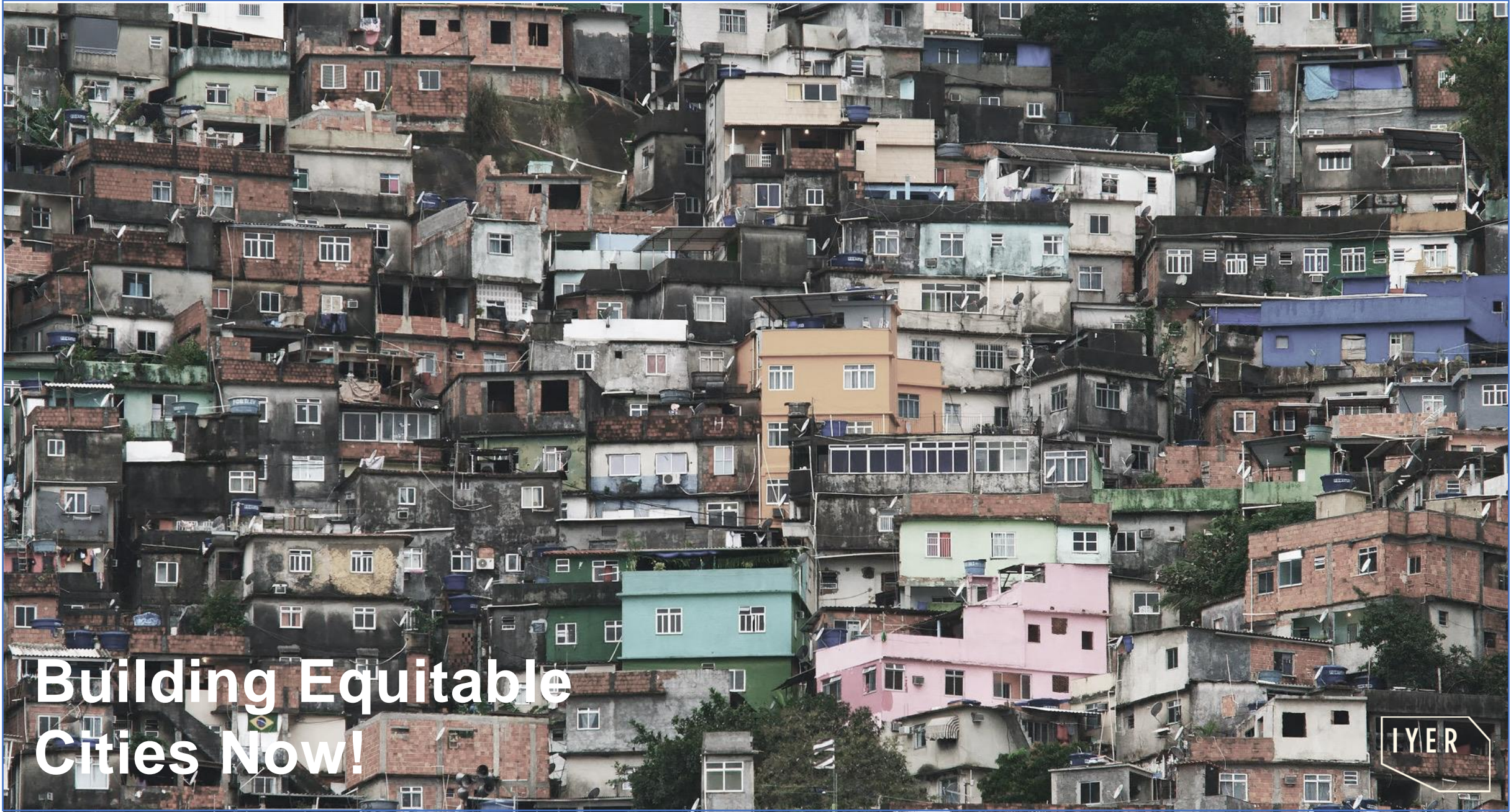






**Cities consistently remain the engine rooms**





Building Equitable  
Cities Now!





An aerial photograph of a large, green grassy field. Numerous people are scattered across the field, some sitting on the grass, some standing, and some walking. There are several strollers and bags on the ground. The overall scene depicts a public park or open space where people are enjoying the outdoors.

# Embrace Biophilia & the Post Covid City is Green

IYER





# Integrate Density & Green

Stefano Boeri Architetti







**The Essential Infrastructure is Public Space  
Reclaim our Streets for People**

IYER





# Essential Infrastructure for the City

Diller Scofidio + Renfro  
[www.highline.org](http://www.highline.org)







**Shift Movement**







# The Future of the Workplace





Bring radical change to the public realm

Repurpose and reprioritise the make-up of our streets,

Pursue density but with the greening of our cities

Inventive with building codes

Innovate a new office model,

Move people differently

Equity in the city for all its citizens.

**Towards a post Covid 19 City**



IYER



**Public Space as  
Basic Structuring  
device**

**Promenade &  
Transit as the  
Primary Spine**

**Central Space for  
transit, mixed use  
& higher intensity**

**Access to Parks  
and Green Space**

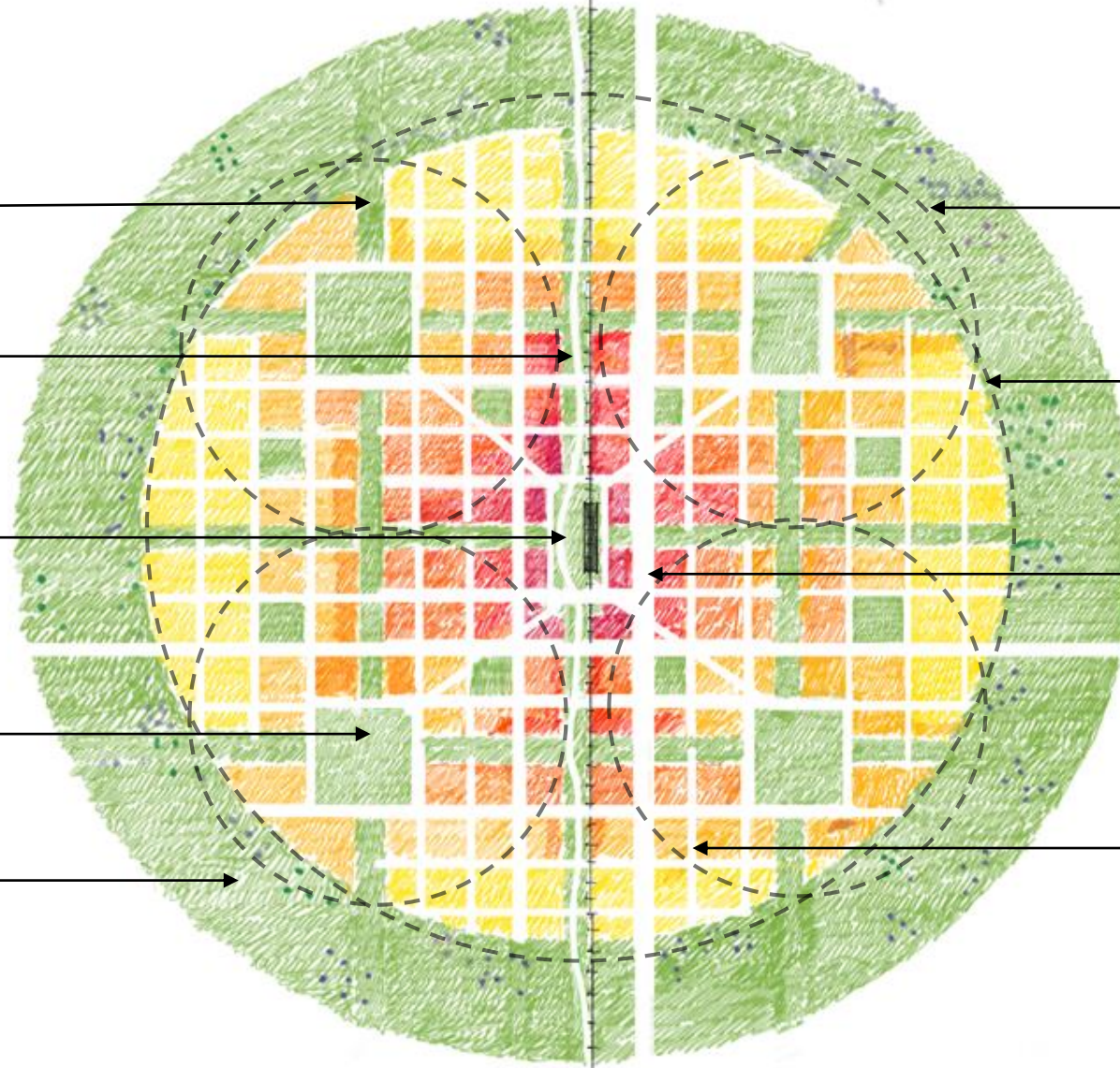
**Green Frame as  
Productive Space**

**400m / 5min  
Walk**

**800m / 10min  
Walk**

**District  
Connectors**

**Shared Local  
Access Network**



**The 10 Minute City**

# **Toward a Post Covid 19 City**





# Thank You



PLANNING URBAN DESIGN ARCHITECTURE